

NACC1 Antibody (C-term)
Purified Rabbit Polyclonal Antibody (Pab)
Catalog # AP21107a**Specification**

NACC1 Antibody (C-term) - Product Information

Application	WB,E
Primary Accession	Q96RE7
Other Accession	O35260 , Q7TSZ8
Reactivity	Mouse
Predicted	Rat
Host	Rabbit
Clonality	Polyclonal
Isotype	Rabbit IgG
Calculated MW	57258

NACC1 Antibody (C-term) - Additional Information**Gene ID** 112939**Other Names**

Nucleus accumbens-associated protein 1, NAC-1, BTB/POZ domain-containing protein 14B, NACC1, BTBD14B, NAC1

Target/Specificity

This NACC1 antibody is generated from a rabbit immunized with a KLH conjugated synthetic peptide between 355-390 amino acids from the C-terminal region of human NACC1.

Dilution

WB~~1:1000

E~~Use at an assay dependent concentration.

Format

Purified polyclonal antibody supplied in PBS with 0.09% (W/V) sodium azide. This antibody is purified through a protein A column, followed by peptide affinity purification.

Storage

Maintain refrigerated at 2-8°C for up to 2 weeks. For long term storage store at -20°C in small aliquots to prevent freeze-thaw cycles.

Precautions

NACC1 Antibody (C-term) is for research use only and not for use in diagnostic or therapeutic procedures.

NACC1 Antibody (C-term) - Protein Information**Name** NACC1

Synonyms BTBD14B, NAC1

Function Functions as a transcriptional repressor. Seems to function as a transcriptional corepressor in neuronal cells through recruitment of HDAC3 and HDAC4. Contributes to tumor progression, and tumor cell proliferation and survival. This may be mediated at least in part through repressing transcriptional activity of GADD45GIP1. Required for recruiting the proteasome from the nucleus to the cytoplasm and dendritic spines.

Cellular Location

Nucleus. Cytoplasm. Note=Distribution in the cytoplasm is dependent on phosphorylation.

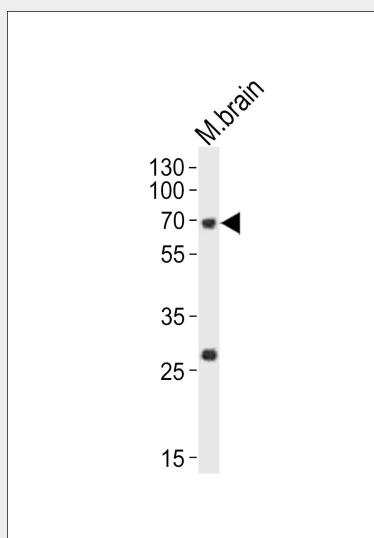
Tissue Location

Overexpressed in several types of carcinomas including ovarian serous carcinomas. Expression levels positively correlate with tumor recurrence in ovarian serous carcinomas, and intense immunoreactivity in primary ovarian tumors predicts early recurrence. Up-regulated in ovarian carcinomas after chemotherapy, suggesting a role in development of chemotherapy resistance in ovarian cancer.

NACC1 Antibody (C-term) - Protocols

Provided below are standard protocols that you may find useful for product applications.

- [Western Blot](#)
- [Blocking Peptides](#)
- [Dot Blot](#)
- [Immunohistochemistry](#)
- [Immunofluorescence](#)
- [Immunoprecipitation](#)
- [Flow Cytometry](#)
- [Cell Culture](#)

NACC1 Antibody (C-term) - Images

Western blot analysis of lysate from mouse brain tissue lysate, using NACC1 Antibody (C-term)(Cat. #AP21107a). AP21107a was diluted at 1:1000. A goat anti-rabbit IgG H&L(HRP) at 1:10000 dilution was used as the secondary antibody. Lysate at 20ug.

NACC1 Antibody (C-term) - Background

Functions as a transcriptional repressor. Seems to function as a transcriptional corepressor in neuronal cells through recruitment of HDAC3 and HDAC4. Contributes to tumor progression, and tumor cell proliferation and survival. This may be mediated at least in part through repressing transcriptional activity of GADD45GIP1. Required for recruiting the proteasome from the nucleus to the cytoplasm and dendritic spines.

NACC1 Antibody (C-term) - References

Cha X.Y.,et al.Submitted (JUN-2001) to the EMBL/GenBank/DDBJ databases.
Nakayama K.,et al.Proc. Natl. Acad. Sci. U.S.A. 103:18739-18744(2006).
Nakayama K.,et al.Cancer Res. 67:8058-8064(2007).
Davidson B.,et al.Hum. Pathol. 38:1030-1036(2007).
Dephoure N.,et al.Proc. Natl. Acad. Sci. U.S.A. 105:10762-10767(2008).